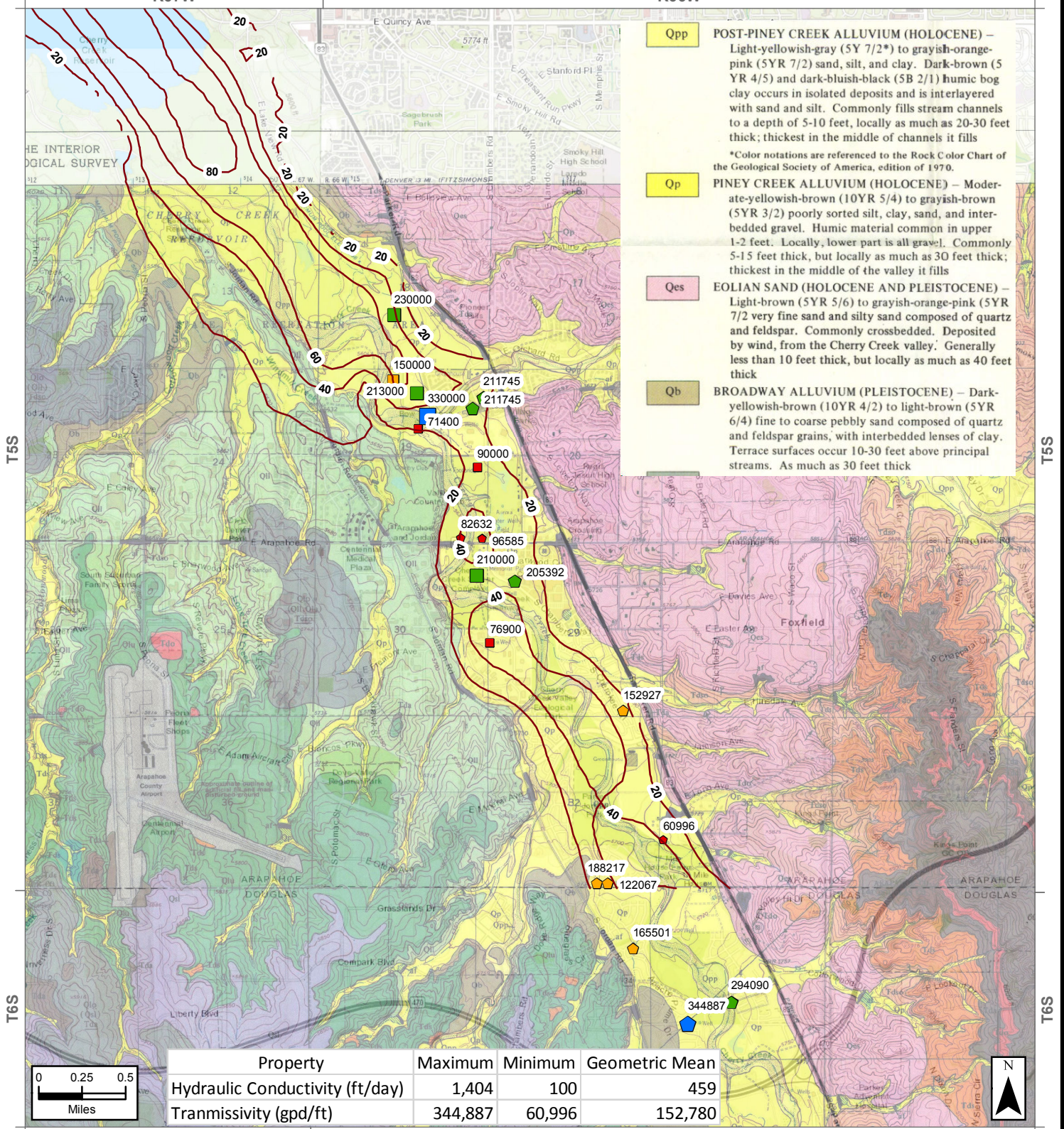


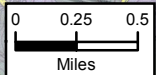
R67W

R66W



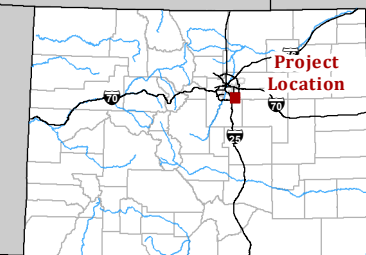
- Qpp** POST-PINEY CREEK ALLUVIUM (HOLOCENE) – Light-yellowish-gray (5Y 7/2\*) to grayish-orange-pink (5YR 7/2) sand, silt, and clay. Dark-brown (5 YR 4/5) and dark-bluish-black (5B 2/1) humic bog clay occurs in isolated deposits and is interlayered with sand and silt. Commonly fills stream channels to a depth of 5-10 feet, locally as much as 20-30 feet thick; thickest in the middle of channels it fills  
\*Color notations are referenced to the Rock Color Chart of the Geological Society of America, edition of 1970.
- Qp** PINEY CREEK ALLUVIUM (HOLOCENE) – Moderate-yellowish-brown (10YR 5/4) to grayish-brown (5YR 3/2) poorly sorted silt, clay, sand, and interbedded gravel. Humic material common in upper 1-2 feet. Locally, lower part is all gravel. Commonly 5-15 feet thick, but locally as much as 30 feet thick; thickest in the middle of the valley it fills
- Qes** EOLIAN SAND (HOLOCENE AND PLEISTOCENE) – Light-brown (5YR 5/6) to grayish-orange-pink (5YR 7/2) very fine sand and silty sand composed of quartz and feldspar. Commonly crossbedded. Deposited by wind, from the Cherry Creek valley. Generally less than 10 feet thick, but locally as much as 40 feet thick
- Qb** BROADWAY ALLUVIUM (PLEISTOCENE) – Dark-yellowish-brown (10YR 4/2) to light-brown (5YR 6/4) fine to coarse pebbly sand composed of quartz and feldspar grains, with interbedded lenses of clay. Terrace surfaces occur 10-30 feet above principal streams. As much as 30 feet thick

Property	Maximum	Minimum	Geometric Mean
Hydraulic Conductivity (ft/day)	1,404	100	459
Transmissivity (gpd/ft)	344,887	60,996	152,780



R67W

R66W



### South Platte Decision Support System Data

- |  |  |  |
|--|--|--|
| <b>Pumping Test Transmissivity (gpd/ft)</b>  | <b>Specific Capacity Transmissivity (gpd/ft)</b>   | <b>Saturated Thickness (20 foot contour intervals)</b> |
| <ul style="list-style-type: none"> <li>■ 3,100 - 100,000</li> <li>■ 100,001 - 200,000</li> <li>■ 200,001 - 300,000</li> <li>■ 300,001 - 400,000</li> </ul> | <ul style="list-style-type: none"> <li>◆ 3,100 - 100,000</li> <li>◆ 100,001 - 200,000</li> <li>◆ 200,001 - 300,000</li> <li>◆ 300,001 - 345,000</li> </ul> |  |

## CHERRY CREEK ALLUVIAL AQUIFER HYDROGEOLOGIC DATA



1357CCB  
December 2017

This product is for reference purposes only and is not to be construed as a legal document or survey instrument.

Path: U:\1357CCB\_CCBWQA\GIS\MXD\GWA\Alluvia\Aquifer.mxd